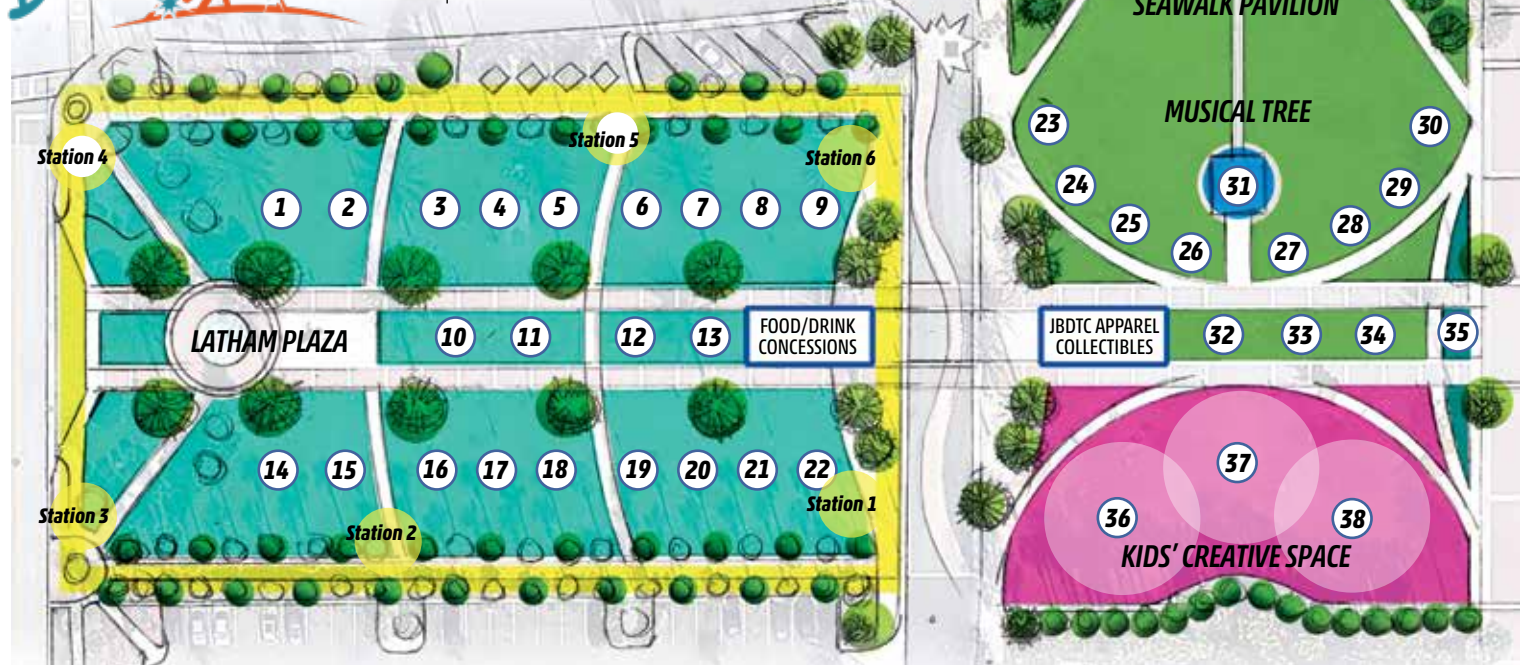




2019 Exhibit Map & Sponsor Locations



- Latham Plaza
\$1800/\$900
22 Available
- Make A Gift
Craft Station \$500
6 Available
- Seawalk Pavilion
Light Show \$3200
12 Available
- Tree Sponsor
\$3600
1 Available
- Kids' Creative
Space \$5000
3 Available
- Stage Programs
\$15,000
1 Available
- Concessions
\$1800
1 Available

2019 JBDTC SPONSORSHIP OPPORTUNITIES

	Seawalk Pavilion Stage Programming \$15,000 <i>Recognition with 2 large banners in Seawalk Pavilion throughout event including Opening Night, Night of Music and Dance, Christmas Eve Service and TaxSlayer Gator Bowl. JBDTC Preferred Merchant. Recognition in media promotions and primary listing in print, e-news, web and social media.</i>	\$15,000
	Kids' Creative Space (3 Available) \$5,000 <i>Interactive kids' play area. Sponsor outreach designed into special weekend programs. JBDTC Preferred Merchant. Additional benefits include on-site promotional opportunities, recognition in media promotions, primary listing in print, e-news, web and social media.</i>	\$5,000
	Musical Tree \$3,600 <i>Exclusive Tree Sponsor with logo on tree skirt (most photographed exhibit). JBDTC Preferred Merchant. Primary listing in print, e-news, web and social media.</i>	\$3,600
	Seawalk Pavilion Light Show Chair (12 Available) \$3,200 <i>Sponsor chair integrated into JBDTC weekend light show, plus on-site promotion, primary listing in print, e-news, web and social media.</i>	\$3,200
	Latham Plaza Chair (14 Small Business Available / 8 Non Profit Available) \$1,800/\$900 <i>JBDTC Preferred Merchant. Benefits include event signage, on-site promotional opportunities, listing on print, e-news, web and social media.</i>	\$1,800/\$900
	Concessions Sponsor \$1,800 <i>JBDTC Preferred Merchant. Exclusive opportunity to support food and drink concessions including hot cocoa, coffee, popcorn, cookies and misc. holiday confections</i>	\$1,800
	Make A Gift Craft Station (6 Available) \$500 <i>Fun way to engage kids in creating holiday gifts. Six sponsored stations for crafting with parents and children – open weekends and week of Christmas</i>	\$500
	Community Chair (10 Available) \$500 <i>Lightweight portable lifeguard chair for display in front of business outside JBDTC. Benefits include signage and listing on web and social media.</i>	\$500
	JBDTC Preferred Merchant Partner \$300 <i>Local merchants partner with JBDTC to promote special holiday discounts in-store, on-site at JBDTC and through web site.</i>	\$300



2019 SPONSOR AGREEMENT

(Please Print)

Company/Organization _____

Contact Person _____

Address _____

City/State/Zip _____

Area Code/Phone Number _____

E-mail _____

Sponsorships* (select one)

- Seawalk Stage Programming Sponsor \$15,000
- Seawalk Pavilion Light Show Chair (12 Available) \$3,200
- Latham Plaza Chair (14 business / 8 non profit available) \$1,800/\$900
- Musical Tree (price includes cost of new skirt wrap) \$3,600
- Kids' Creative Space (3 Available) \$5,000

- Concessions Sponsor \$1,800
- Make A Gift Station (6 Available)..... \$500
- Community Chair (10 Available)..... \$500
- JBDTC Preferred Merchant Partner \$300
- Other _____

EARLY PAYMENT NOTES:

#Exhibit Position Yes, we are interested in 10% discount with full early payment. Total sponsorship amount: \$ _____

Yes, we would like to make two payments (5% discount, previous sponsors only). First payment of 50% by 5.14.19. Final payment by 7.14.19

Comments: _____

***NOTE: Sponsors will be responsible for design/build support and material costs. Chair decorating expenses including lights, misc. materials, construction and storage are the responsibility of the sponsor. Deck The Chairs will provide design support and can assist with build based on sponsor need and approved additional expenditures.**

Payment Information

The sponsor will provide full payment with signed contract (unless noted in early payment discount comments).
 The undersigned hereby authorizes Deck The Chairs to include company/organization information on specified marketing materials.
 The undersigned also agrees to pay in full for the sponsorship per terms noted above. Please sign and return indicating acceptance.

Make checks payable to: Deck The Chairs Inc. | Mail to: 3948 3rd Street South, #372, Jacksonville Beach, Florida 32250-5847
 (Please contact Margaret at 904.247.9570 for credit card payment option)

Signature _____ Date _____